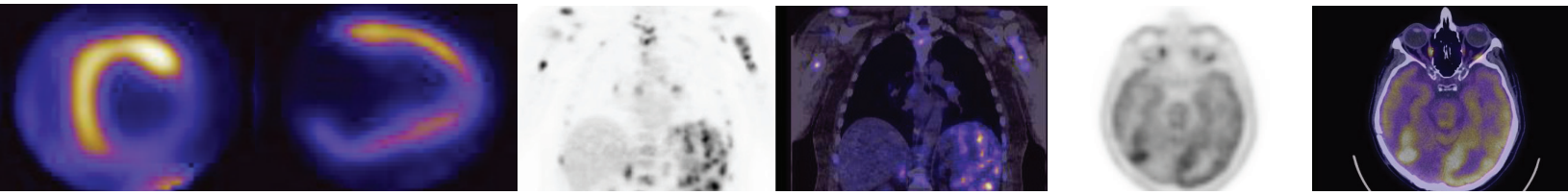


PET PROS

PET Professional Resources and Outreach Source



Part I: NCCN Practice Guidelines Tabular Summary PET and PET/CT

NCCN guidelines were reviewed on 12/03/2008 for utilization of PET and PET/CT (available at: http://www.nccn.org/professionals/physician_gls/f_guidelines.asp). This tabular summary lists all of the practice guidelines, and indicates whether or not PET and PET/CT are included.

	Diagnosis	Staging	Re-Staging	Recurrence	Therapy Evaluation	Follow-up/Surveillance
Acute Myeloid Leukemia						
Bladder Cancer						
Bone Cancer						
Chondrosarcoma						
Ewing's Sarcoma		●	●			●
Osteosarcoma		●	●	●		●
Breast Cancer						
CNS Cancers						
Anaplastic Tumors				●		
Metastatic lesions	●					
Primary CNS Lymphoma	●					
Cervical Cancer		●		●		●
Chronic Myelogenous Leukemia						
Colorectal Cancer						
Colon Cancer		●		●		
Rectal Cancer				●		
Anal Cancer		●				
Gastric Cancer		●	●			
Head and Neck Cancer						
Occult Primary	●					
Nasopharynx		●				
All Other Types						
Hepatobiliary Cancer						
Hodgkin Disease		●	●			
Kidney Cancer						
Melanoma		●		●		
Multiple Myeloma		●				●
Myelodysplastic Syndromes						
Neuroendocrine Tumors						
Non-Hodgkin's Lymphomas		●	●			●
Non-Melanoma Skin Cancers						
Basal and Squamous Cell Skin Cancer						
Dermatofibrosarcoma Protuberans						
Merkel Cell Carcinoma	●	●				
Non-Small Cell Lung Cancer		●				
Occult Primary	●	●				
Ovarian Cancer				●		●
Pancreatic Adenocarcinoma						
Prostate Cancer						
Small Cell Lung Cancer		●				
Soft Tissue Sarcoma						
Extremity	●	●			●	
Retroperitoneal/Intra-Abdominal						
Gastrointestinal Stromal Tumors (GIST)		●			●	
Desmoid tumors						
Testicular Cancer						
Seminoma				●		
Nonseminoma						
Thyroid Cancer						
Papillary Carcinoma				●		
Follicular Carcinoma				●		
Hürthle Cell Neoplasm				●		
Medullary Carcinoma						
Anaplastic Carcinoma						
Uterine Neoplasms						
Endometrial Cancer						
Uterine Sarcoma						